

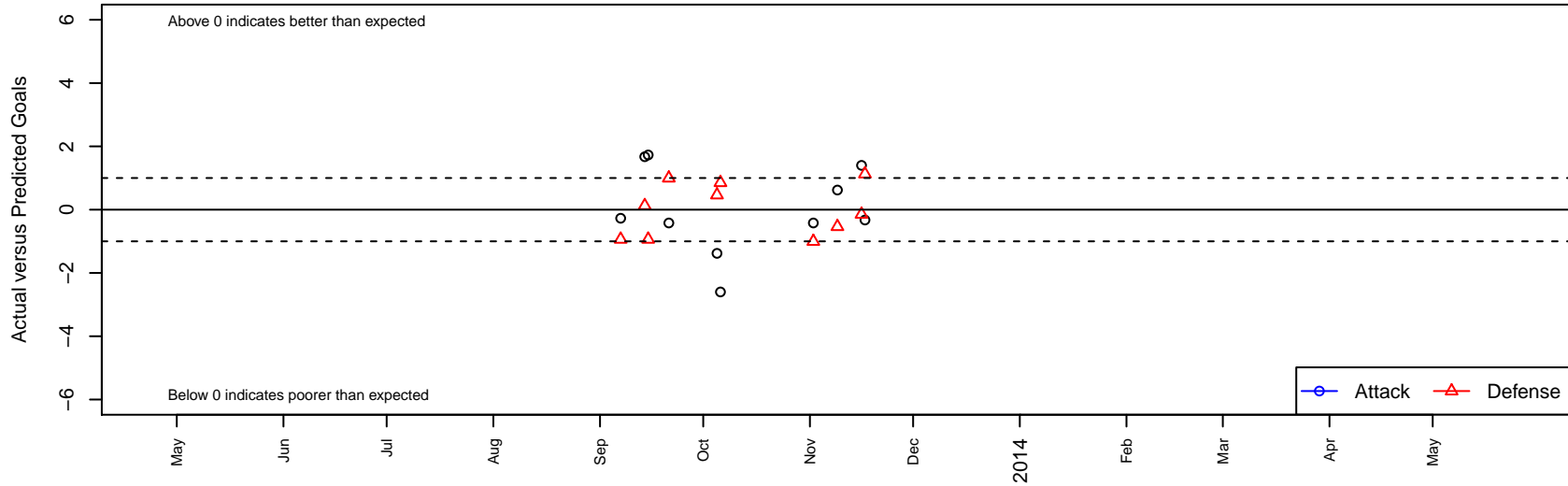
Clovis JR SL Crossfire Rage Elite G02

, CAN
 G02 total strength=858
 attack=1.44 defense=1.04
 alt names used:
 Clovis Crossfire Rage 02G Elite

Venues played:
 NorCal Premier F11 – Region 7–8 U11



Clovis JR SL Crossfire Rage Elite G02
 Dots are actual minus expected GF (blue circles) and GA (red triangles).
 Blue line is smoothed change in attack strength. Red is smoothed change in defense strength.



	date	home		away		venue	pred.home	pred.away
2847	2013-11-17	Clovis JR SL Crossfire Rage Elite G02	1	Central CA Soccer Alliance Black G02	0	NorCal Premier FI1 – Region 7-8 U11	1.33	1.13
2780	2013-11-16	MFC Benfica G02	1	Clovis JR SL Crossfire Rage Elite G02	9	NorCal Premier FI1 – Region 7-8 U11	0.85	7.60
2670	2013-11-09	Clovis JR SL Crossfire Rage Elite G02	3	Turlock FC Hurricanes G02	1	NorCal Premier FI1 – Region 7-8 U11	2.38	0.46
2526	2013-11-02	Stockton Storm FC Thunder G02	2	Clovis JR SL Crossfire Rage Elite G02	3	NorCal Premier FI1 – Region 7-8 U11	1.00	3.42
2006	2013-10-06	Clovis JR SL Crossfire Rage Elite G02	5	MFC Benfica G02	0	NorCal Premier FI1 – Region 7-8 U11	7.60	0.85
1898	2013-10-05	Turlock FC Hurricanes G02	0	Clovis JR SL Crossfire Rage Elite G02	1	NorCal Premier FI1 – Region 7-8 U11	0.46	2.38
1577	2013-09-21	Clovis JR SL Crossfire Rage Elite G02	3	Stockton Storm FC Thunder G02	0	NorCal Premier FI1 – Region 7-8 U11	3.42	1.00
1492	2013-09-15	Cal Odyssey SC Red G02	3	Clovis JR SL Crossfire Rage Elite G02	3	NorCal Premier FI1 – Region 7-8 U11	2.06	1.27
1409	2013-09-14	Central CA Soccer Alliance Black G02	1	Clovis JR SL Crossfire Rage Elite G02	3	NorCal Premier FI1 – Region 7-8 U11	1.13	1.33
1234	2013-09-07	Clovis JR SL Crossfire Rage Elite G02	1	Cal Odyssey SC Red G02	3	NorCal Premier FI1 – Region 7-8 U11	1.27	2.06